



Paseo Miramón, 170
20014 San Sebastián, Spain
Tel. +34 943 44 89 44

customerarea.tv@ikusi.com
www.ikusi.tv/en

RELEASE NOTES

Product: SPI-300 (ref. 4070)

Version: 4.18

Date: 16/06/2016

Content List

1. GENERAL INFORMATION

1.1 Purpose and Coverage

SPI-300 is the programmer unit used in order to configure ClassA modules. The connection is made by serial cable, using the DB-9 base from the frontal panel of the modules.

This document describes the new features, compatibility problems, resolved problems and other known problems associated with this product version.

1.2 Version Summary

- 4.18
- 4.17
- 4.16
- 4.15
- 4.14

1.3 Product Identification

1.3.1 Software Review

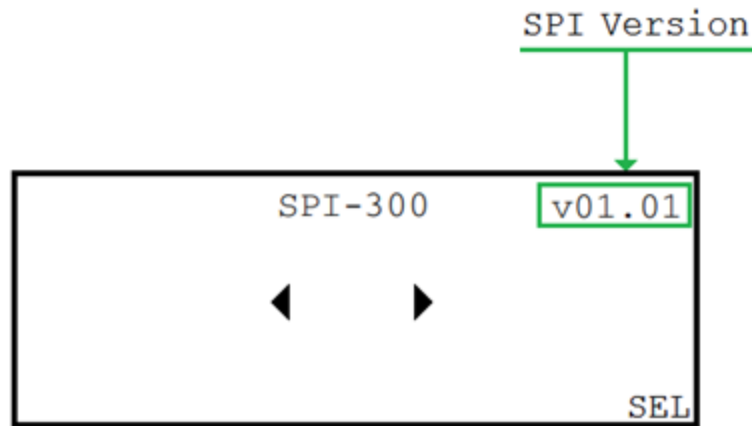
The software version of the equipment it is checked through SPI-300 programmer unit itself.

Whenever SPI-300 programmer unit is connected, version identifying data is loaded in the screen.



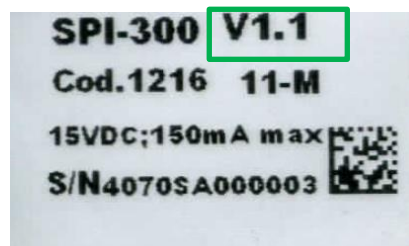
Paseo Miramón, 170
20014 San Sebastián, Spain
Tel. +34 943 44 89 44

customerarea.tv@ikusi.com
www.ikusi.tv/en



1.3.2 Hardware Review

This revision is compatible only with 4.xx hardware versions
To know the hardware version of the programming unit, check the sticker on the back:



1.4 Compatibility Information

1.4.1 Supported HW

This revision is compatible only with 4.xx hardware versions

SPI compatibility table

Given the existence in the market of different versions of software and hardware modules and programming unit, with the objective to know the compatibility at a glance, the following compatibility chart has been created, taking into account the following:

- SPI-300 programmer unit hardware and software versions
- Module families

RELEASE NOTES

Product: SPI-300

Version: 4.17

Date: 16/06/2016



Paseo Miramón, 170
20014 San Sebastián, Spain
Tel. +34 943 44 89 44

customerarea.tv@ikusi.com
www.ikusi.tv/en

		SPI SW v2.10	STG	SZB-400	MCP-600	MDI-6xx/8xx	MDI-910	MTI-8xx	MTI-9xx	iPack	THx	SHC	QRA	MHD-201
Revisión HW↓	Revisión SW↓													
1	2.18	✓	✓	✓	✓	✓	✗	✗	✗	✗	✗	✗	✗	✗
1	3.14	✓	✗	✗	✗	✗	✓	✓	✓	✓	✓	✓	✓	✗
2	4.15	✓	✓	✓	✓	✓	✓	✓	✓	✓	✓	✓	✓	✓
2	4.16	✓	✓	✓	✓	✓	✓	✓	✓	✓	✓	✓	✓	✓
2	4.17	✓	✓	✓	✓	✓	✓	✓	✓	✓	✓	✓	✓	✓
2	4.18	✓	✓	✓	✓	✓	✓	✓	✓	✓	✓	✓	✓	✓

1.4.2 Backwards compatibility notes

Making downgrade is possible. All 4.xx previous revisions are compatible.

2. VERSION HISTORY

2.1 Software Version 4.18

-> 16/06/2016

2.1.1 New functionalities

- None

2.1.2 Resolved problems

Compliance with the display specifications are improved

2.1.3 Known problems

- *None*

2.2 Software Version 4.17

-> 16/05/2016

2.1.4 New functionalities

- None

2.1.5 Resolved problems

- In “Settings” → “V/A Selections” the parameters couldn’t be validated at once on THF, SRF and SRF modules.

2.1.6 Known problems

- *None*

RELEASE NOTES

Product: SPI-300

Version: 4.17

Date: 16/06/2016



Paseo Miramón, 170
20014 San Sebastián, Spain
Tel. +34 943 44 89 44

customerarea.tv@ikusi.com
www.ikusi.tv/en

2.3 Software Version 4.16

-> 26/04/2016

2.1.7 New functionalities

- None

2.1.8 Resolved problems

- Impossibility to regulate audio level on THF and TRF modules solved.

2.1.9 Known problems

- *None*

2.4 Software Version 4.15

-> 30/05/2014

2.1.10 New functionalities

- Includes support in order to program MHD-201 (ref. 3854) ClassA HD modulator

2.1.11 Resolved problems

- Solves visibility problems with “Conditional Access” menu for MDI-910 (ref.4020) modules

2.1.12 Known problems

- *Select Country* text overlaid [MHD-201 (ref. 3854)]
- “Update” option no operative (is updated via the Web) [MHD-201 (ref. 3854)]
- “NIT” option no operative (is updated via the Web) [MHD-201 (ref. 3854)]

3. UPDATE INSTRUCTIONS

3.1 Installation environment

In order to upgrade SPI-300 version, the following is needed:

- Make the connections which appear in the image. Auxiliary +15VDC/1A power supplying for SPI-300 programmer unit.

RELEASE NOTES

Product: SPI-300

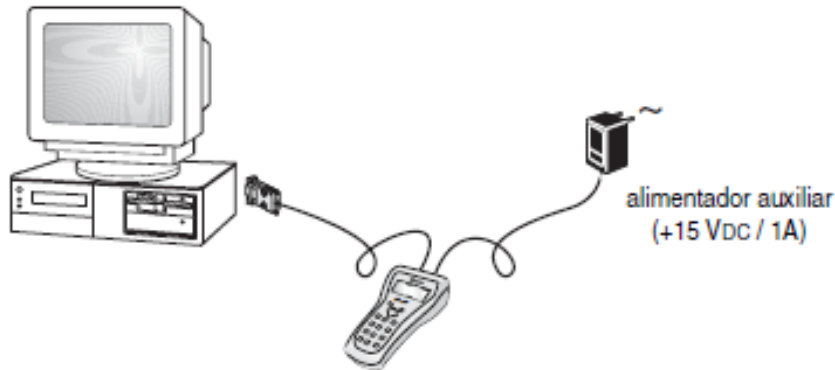
Version: 4.17

Date: 16/06/2016

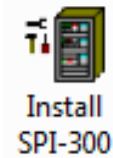


Paseo Miramón, 170
20014 San Sebastián, Spain
Tel. +34 943 44 89 44

customerarea.tv@ikusi.com
www.ikusi.tv/en

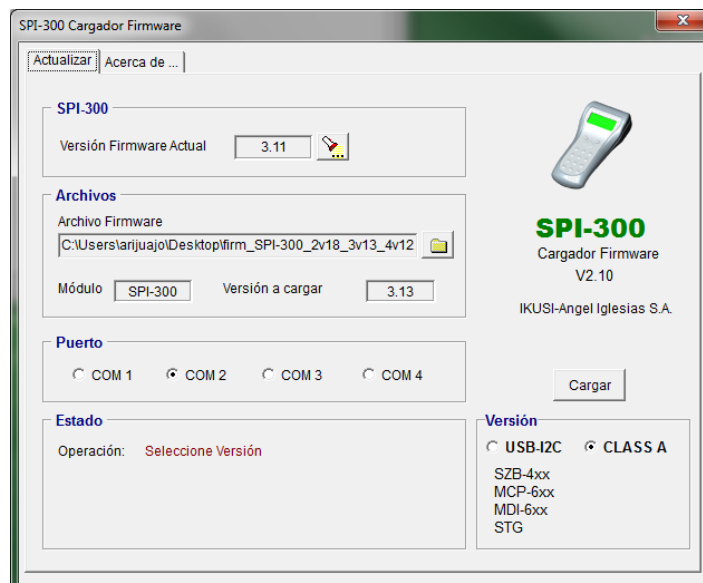


- Download to your PC *Installing Load Software* from <http://www.customerarea.ikusi.tv> website.
- Execute *Install SPI-300* loader application
- Download to your PC *firm_SPI-300_V4.18.zip* file from <http://www.customerarea.ikusi.tv>



3.2 Firmware upgrade in SPI-300 programmer unit

- Select COM port in use between the SPI and the PC
-



RELEASE NOTES

Product: SPI-300

Version: 4.17

Date: 16/06/2016



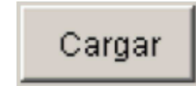
Paseo Miramón, 170
20014 San Sebastián, Spain
Tel. +34 943 44 89 44

customerarea.tv@ikusi.com
www.ikusi.tv/en

- Select *firm_SPI-300_V4.18.zip* firmware file from your PC



- Load the firmware file to the loader application



4. DOCUMENTATION

- [SPI-300 Data Sheet](#)
- [SPI-300 User guide](#)

RELEASE NOTES

Product: SPI-300

Version: 4.17

Date: 16/06/2016