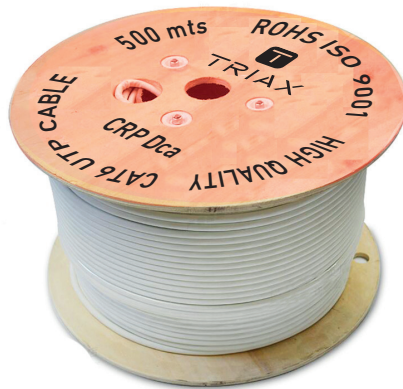
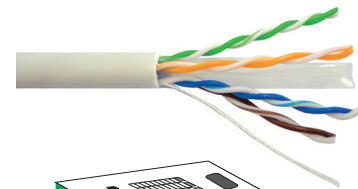
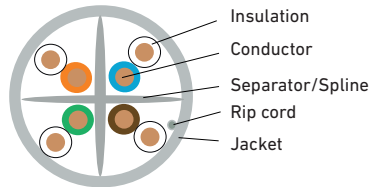


CAT6 UTP cables Dca CPR euroclass

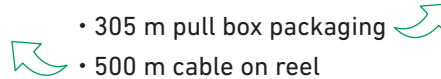
❖ Structured cable network



CT6-5CUD (2382)



- CAT6 UTP Cables
- Cu Conductor
- Halogens free jacket (LSZH)
- Dca CPR Euroclass
- 305 m pull box packaging



Technical Specifications

MODEL		CT6-5CUD	CT6A-CUD	CT6-CUD	CT6-CAD	CT6-CUE
REF.		2382	2497	2496	2492	2499
Category		UTP CAT6	UTP CAT6A	UTP CAT6	UTP CAT6	UTP CAT6
Standard		TIA/EIA-568C-2, ISO/IEC 11801	TIA/EIA-568B-2, ISO/IEC 11801	TIA/EIA-568C-2, ISO/IEC 11801	TIA/EIA-568C-2, ISO/IEC 11801	TIA/EIA-568C-2, ISO/IEC 11801
Conductor	Material	100% copper	100% copper	100% Copper	CCA 30% copper	100% copper
	Solid/Stranded	Solid	Solid	Solid	Solid	Solid
	AWG	24 AWG	23 AWG	24 AWG	23 AWG	24 AWG
	Diameter	0.57 mm ± 0.01	0.57 mm ± 0.01	0.51 mm ± 0.01	0.57 mm ± 0.01	0.51 mm ± 0.01
	Resistance	9.5 Ω/100 m	9.5 Ω/100 m	9.5 Ω/100 m	10.4 Ω/100 m	9.5 Ω/100 m
Isolation	Material	PE	PE	PE	PE	PE
	Thickness	0.2 mm ± 0.01	0.2 mm ± 0.01	0.2 mm ± 0.01	0.22 mm ± 0.02	0.2 mm ± 0.01
	Diameter	0.91mm ± 0.03	0.91mm ± 0.03	0.91mm ± 0.03	1.02 mm ± 0.03	0.91mm ± 0.03
Color codes	Par 1	Blue	Blue-White	Blue-White	Blue-White	Blue-White
	Par 2	Orange	Orange-White	Orange-White	Orange-White	Orange-White
	Par 3	Green	Green-White	Green-White	Green-White	Green-White
	Par 4	Brown	Brown-White	Brown-White	Brown-White	Brown-White
Separator/spline		Yes	Yes	Yes	Yes	Yes
Rip cord		Yes	Yes	Yes	Yes	Yes
Jacket	Material	LSZH	LSZH	LSZH	LSZH	LSZH
	Thickness	0.60 mm ± 0.05	0.60 mm ± 0.05	0.60 mm ± 0.05	0.60 mm ± 0.05	0.60 mm ± 0.05
	Diameter	6 mm ± 0.03	6 mm ± 0.03	6 mm ± 0.03	6.1 mm ± 0.03	6 mm ± 0.03
	Color	White	White	White	White	White
Reaction to fire		CPR Dca Euroclass	Cca CPR Euroclass	Dca CPR Euroclass	Dca CPR Euroclass	Eca CPR Euroclass
NVP		69%	69%	69%	69%	69%
Reel		500 mts	305 mts	305 mts	305 mts	305 mts
Packaging		Wooden drum / Carton box	Pull box	Pull box	Pull box	Pull box
Dimensions		500 x 410 x 415 mm	337 x 270 x 342 mm	337 x 270 x 342 mm	337 x 270 x 342 mm	337 x 270 x 342 mm